

iris aavaas:
THE LIFESTYLE
RESIDENCES OF
SOUTH DELHI



IRIS AAVAAS

Crafted in the heart of New Delhi, Safdarjung enclave, Iris Aavaas is as exclusive as it gets.

Comprising of a compact tower with a standalone apartment on each of its four floors, it provides utmost privacy to each residence.

First grade building material consisting of Tata steel TMT bars, Ultratech cement, super fine stone dust, Baghat red bricks, etc. are used to deliver uncompromising quality.

A rare collection of uber indulgent homes, Iris Aavaas at Safdarjung enclave, are 3 bedroom apartments of 250 sq. yds. each.

Located in a peaceful colony amidst many green and maintained parks, Safdarjung enclave is well connected to the metro station, hospitals, grocery markets, and the main roads.

PRIME FEATURES

- Preferential view from each apartment
- Rear side park facing
- 10km from International airport
- Independent services, stilt car parking and servant quarter for each apartment
- High speed elevators
- Earthquake resistant building
- 5 minutes walk to the well known Deer Park



DIRECTION MAP

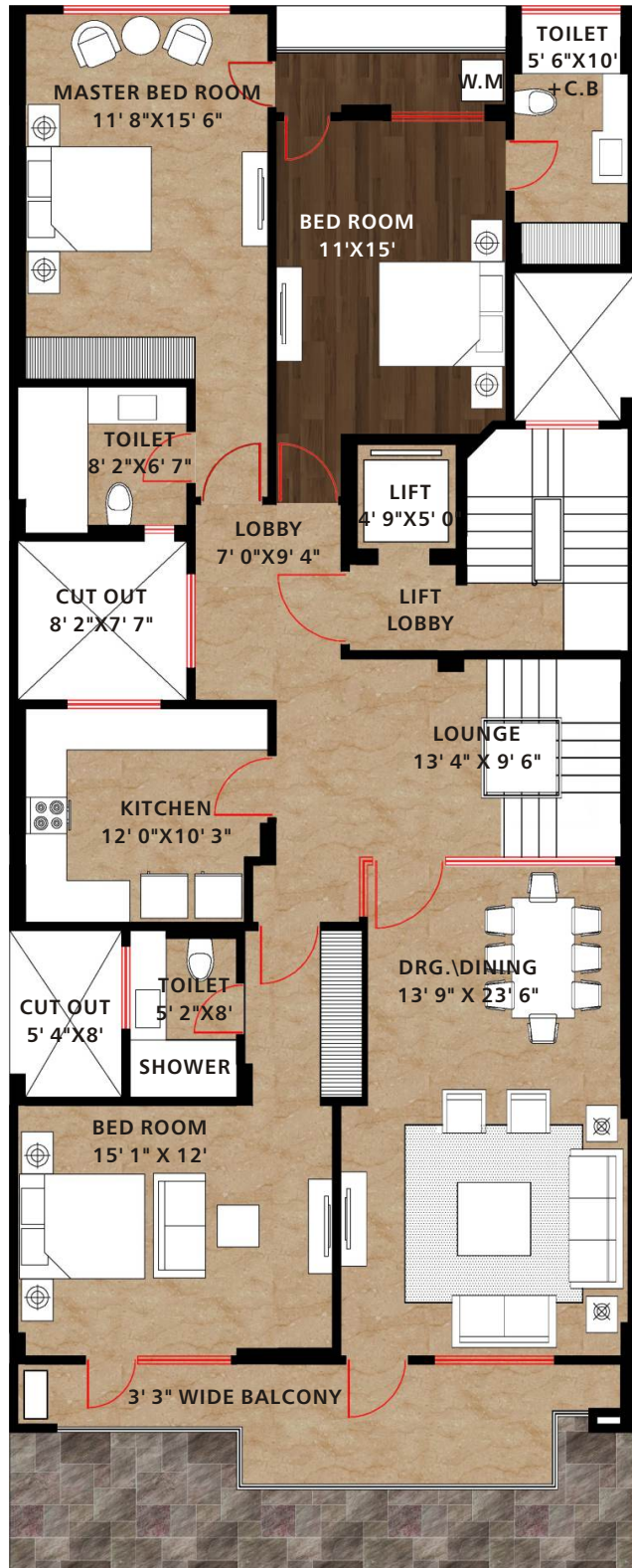


IRIS AAVAAS: B-5/139, Safdarjung Enclave, South Delhi

TREHAN GROUP: SIX DECADES OF EXCELLENCE

- Over 6 decades of unprecedented experience in the field of construction
- Leading government and private contractors with over 100 projects in Delhi & NCR
- Developed more than 200 residences in Delhi alone
- More than 10 million sq. ft. area in prime locations of Delhi and NCR
- In-house quality control systems and processes with structured manuals to deliver excellence in quality
- Expertise in group housing projects, Independent hi-end residences, Farm houses, Commercial complexes, IT parks, Industries, etc.

FLOOR PLAN



SPECIFICATIONS

Building Material	<ul style="list-style-type: none">• Tata Steel TMT Bars• Ultratech Cement• Super Fine Stone Dust & Baghpat Red Bricks
Elevation	<ul style="list-style-type: none">• Imported Fundamax Wood cladding• GRC, Italian marble Travertino and White Paint
Master Bed Room	<ul style="list-style-type: none">• Flooring - Premium Beige "Bottochino"• Ceilings - Elegant Pop False with Straight Lines
Living Room	<ul style="list-style-type: none">• Flooring - Premium Beige "Bottochino"• Ceilings - Elegant Pop False with Straight Lines
Bathrooms	<ul style="list-style-type: none">• Flooring - Italian Marble with skirting• Fittings - Premium Single Lever "Grohe" Germany• Sanitary ware - European Premium Brand "Duravitt"• Cisterns - Grohe, Germany• Spanish Tiles on Walls
Wood Work	<ul style="list-style-type: none">• Doors in CP Teak and all Wood work in "Ivory Coast" Teak• Wardrobes with renewed shutters and fittings by Hettich
Kitchen	<ul style="list-style-type: none">• Premium Modular• Latest Soft Closing Units• Hardware from Hettich/Haffle• Counter & Flooring - Imported Granite and Italian marble Bottochino
Balconies	<ul style="list-style-type: none">• Exclusive 304 Grades Stainless Steel• Toughened Frosted Glass Railings• Imported Marble Bottochino flooring
Staircase	<ul style="list-style-type: none">• Premium Indian Granite "Coffee Brown"• Non Skid Leather Finish
Elevator	<ul style="list-style-type: none">• Premium Stainless Steel from Europe's Top Brand Kone
Electrical Fittings	<ul style="list-style-type: none">• Finolex Fire Proof Cables, L&T & MCB• Premium Switches From North West
Water Supply	<ul style="list-style-type: none">• Overhead Water Tank - 1500 L• Underground Water Tank - 4000 L
Premium Amenities : Fully AC with 1.5 tonne air conditioners by leading Japanese brand "Daikin", 4x Storage Geysers, Dedicated Parking, Wardrobes, Video Door Phone Security, EPABX, Wireless LAN Ready, Water RO In Kitchen, etc.	

For further information and queries on Iris Aavaas, contact us on +91 9910700018.



trehan group of companies

corp. office: iris tech park, 808, tower a, sector 48, sohna road, gurgaon, haryana - 122018

t: 0124 - 4430 4747, 4438 4747 f: 0124 - 442 34747 e: info@trehanbuilders.com

w: www.trehanbuilders.com

regd. office: e-26, panchshila park, new delhi - 110017